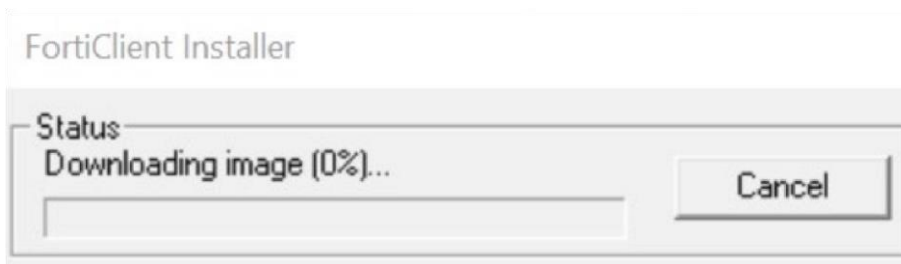


VPN Connection for Home Windows Computer to Office Windows Computer

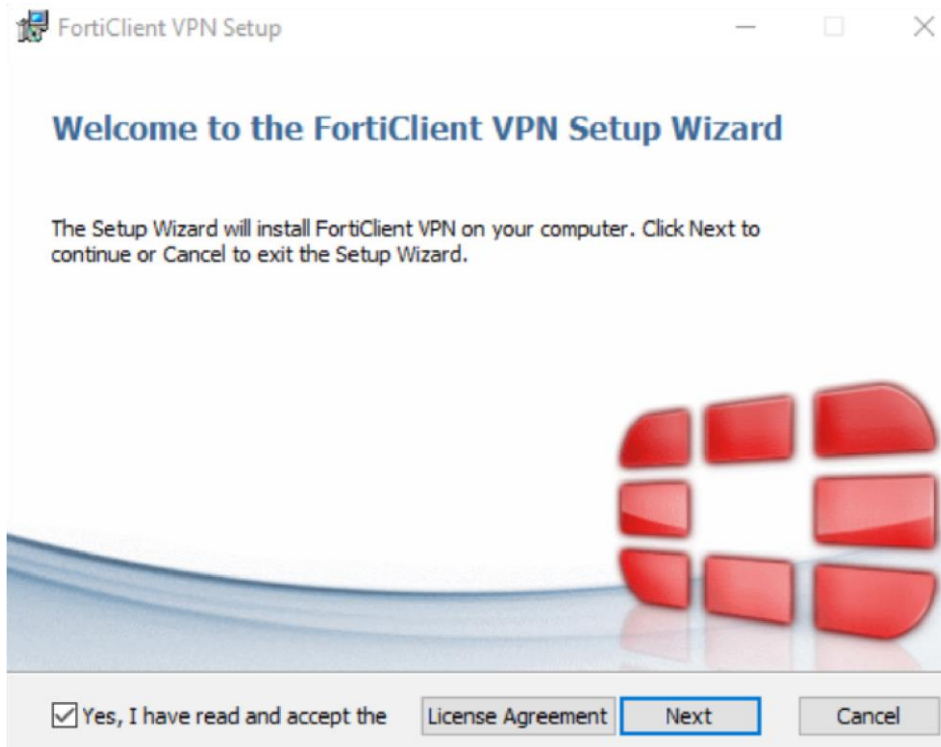
1. Open browser and access below URL for downloading the installer.
<https://www.fortinet.com/support/product-downloads#vpn>
*it was supported for Windows 10 or above.



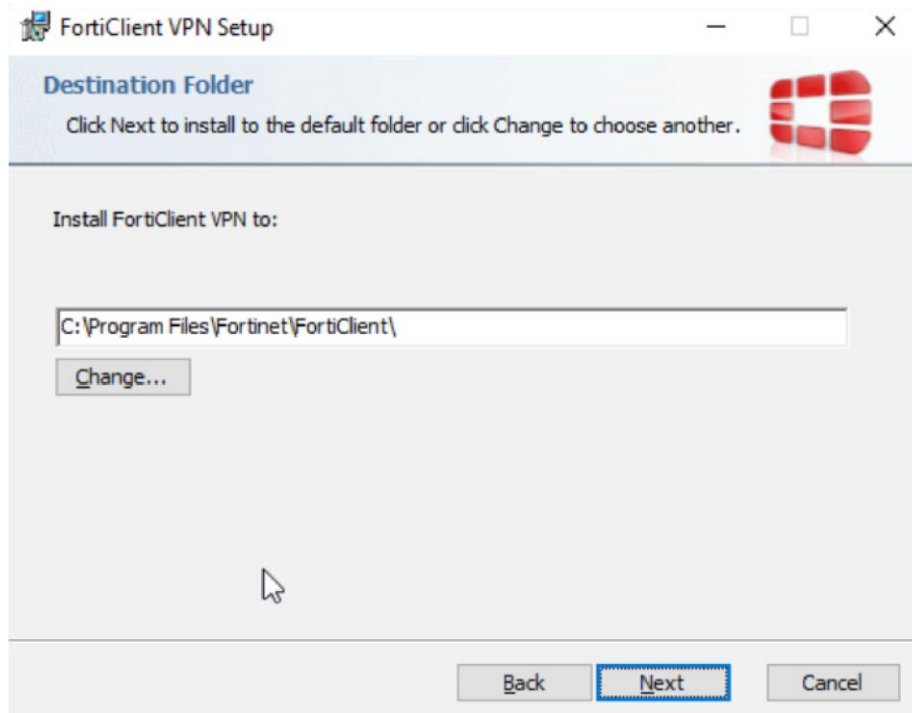
2. Run the FortiClientXXX.exe to execute FortiClient Installer.



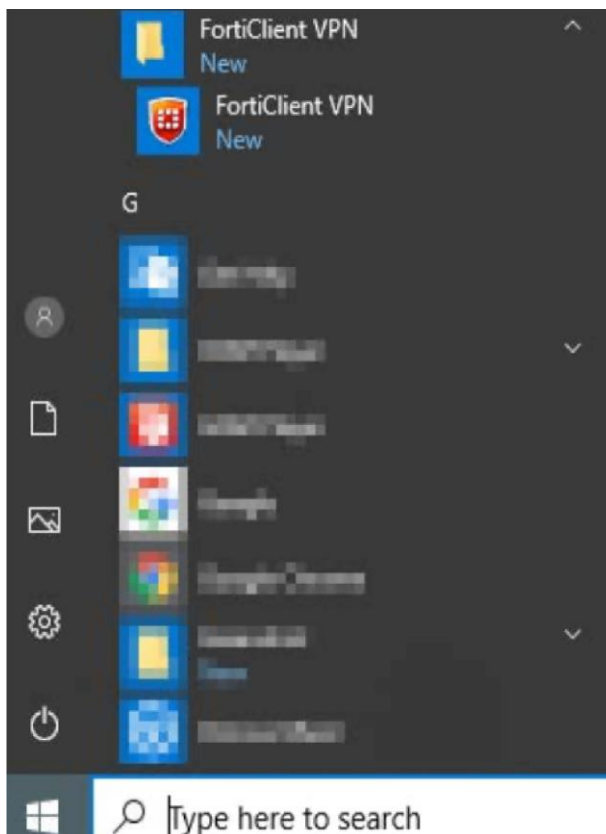
3. Read and click “Yes, I have read and accept License Agreement”, then Next.



4. Recommended to install to default path, then Next > Install > Finish.



5. Execute the FortiClient VPN from the Start Menu



6. Please Accept the acknowledge and click Configure VPN.

Enter the following information and Save:

- Connection Name: HKAPA VPN
- Remote Gateway: rs.hkapa.edu
- Select Customize port and fill in 1443
- Select Enable Single Sign On (SSO) for VPN Tunnel

Edit VPN Connection

VPN: **SSL-VPN** | IPsec VPN | XML

Connection Name: **HKAPA VPN**

Description:

Remote Gateway: **rs.hkapa.edu** ✕
+Add Remote Gateway


Customize port: **1443**

Single Sign On Settings:
 Enable Single Sign On (SSO) for VPN Tunnel
 Use external browser as user-agent for saml user authentication
 Enable auto-login with Azure Active Directory

Client Certificate: **None** ▾
 Enable Dual-stack IPv4/IPv6 address

Cancel **Save**

7. Click on SAML Login

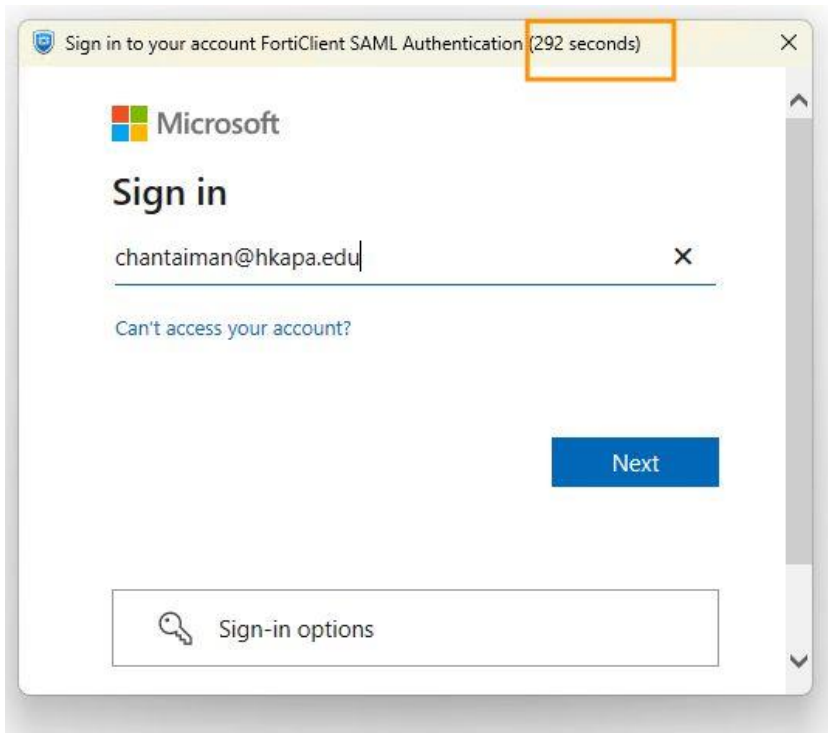


VPN Name: **HKAPA VPN** ▾ ≡

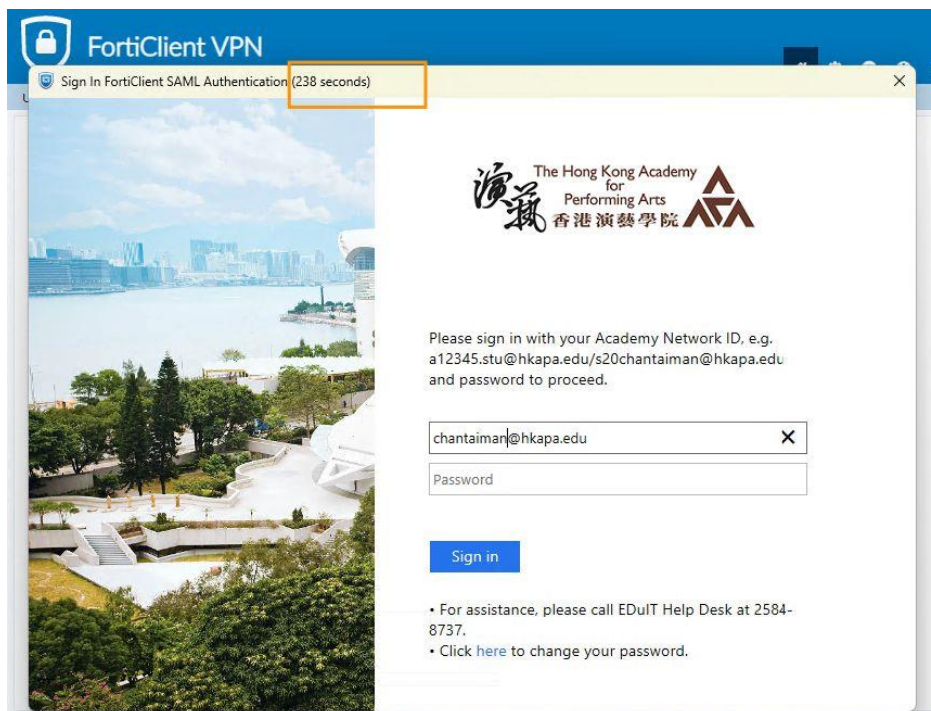
Always Up

SAML Login

8. Sign in your APA account for FortiClient SAML Authentication.



9. Fill in your Academy email and Password, then sign in.



10. Approve the login via Microsoft Authenticator APP for VPN Connection



11. VPN was connected when you see the Duration is counting like screenshot. *It was temporary denied to access Internet from your PC when you were connecting to HKAPA VPN.

VPN Connected



VPN Name HKAPA VPN
IP Address [REDACTED]
Username [REDACTED]
Duration 00:00:02
Bytes Received 3.73 KB
Bytes Sent 12.55 KB

Disconnect

If it was unable to establish the VPN, please check the customize port from Edit the selected connection, it should be 1443

VPN Name: HKAPA VPN

Username: [input field]

Password: [input field]

Save Password Always Up

Connect

12. When HKAPA VPN was established, you are connected into HKAPA network from your own Windows computer now.

13. You can disconnect the HKAPA VPN by clicking the Disconnect button.

VPN Name: HKAPA VPN

IP Address: [redacted]

Username: [redacted]

Duration: 00:17:19

Bytes Received: 245.08 KB

Bytes Sent: 258.4 KB

Disconnect

<< End >>