



- RITA TONG LIU DRAMA THEATRE -

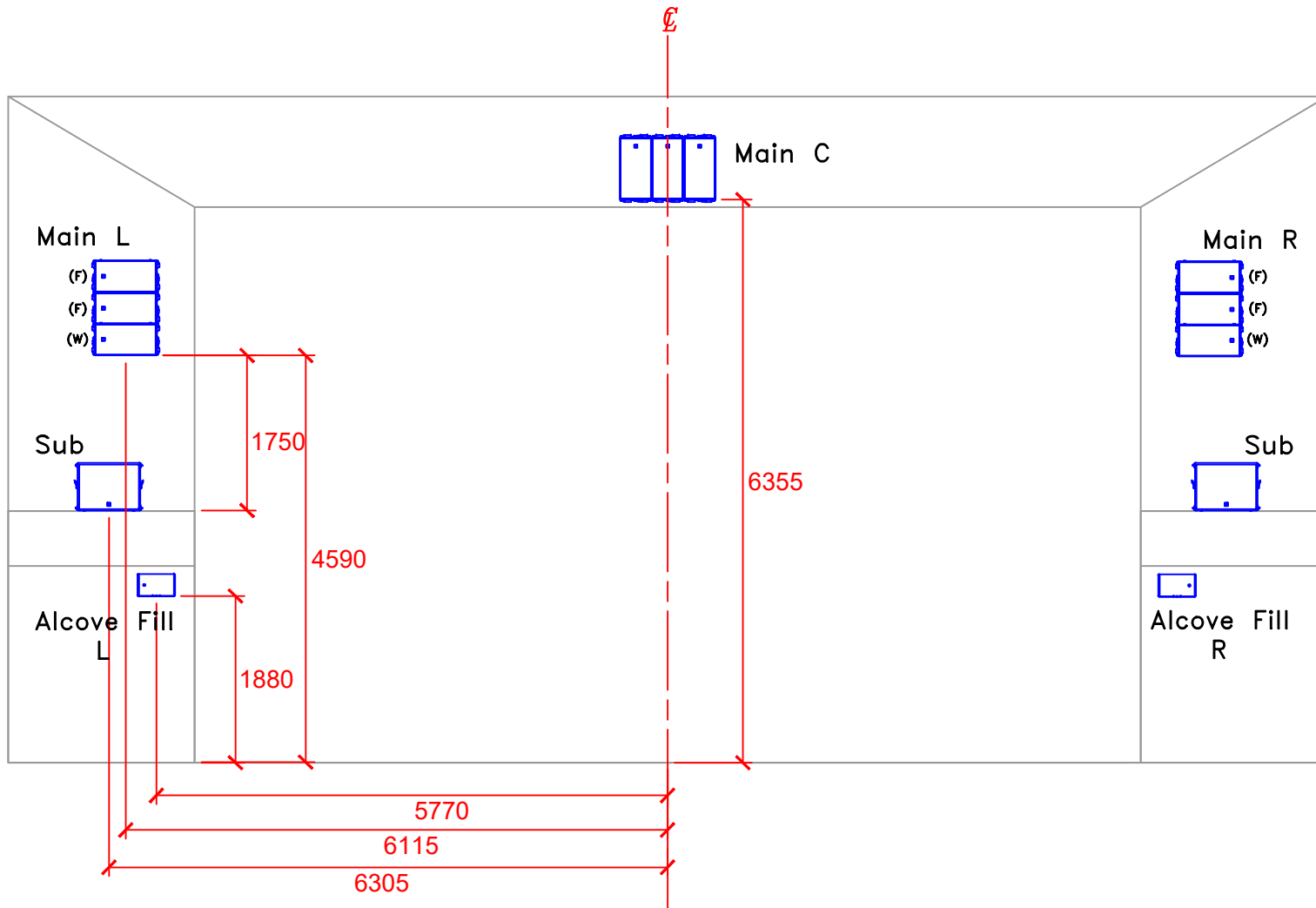
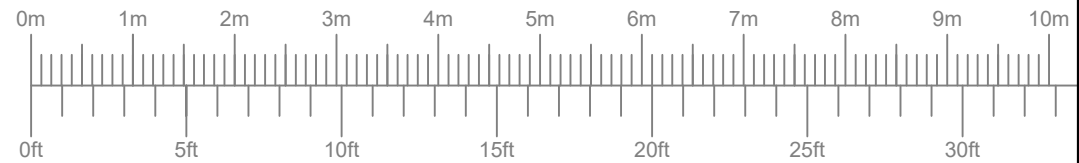
Front of House PA Speaker Position

Venue Technical Department, HKAPA

2021

The Hong Kong Academy for Performing Arts

Rita Tong Liu Drama Theatre
PA Speaker Position, Front View



LEGEND 音箱設備



L'acoustics ARCS Wide speakers (Main C)
中央聲道揚聲器系統



L'acoustics ARCS Focus (F) &
Wide (W) speakers (Main L/R)



兩側的雙聲道揚聲器系統



L'acoustics SB18i subwoofers (Sub)
兩側的雙聲道低頻揚聲器系統

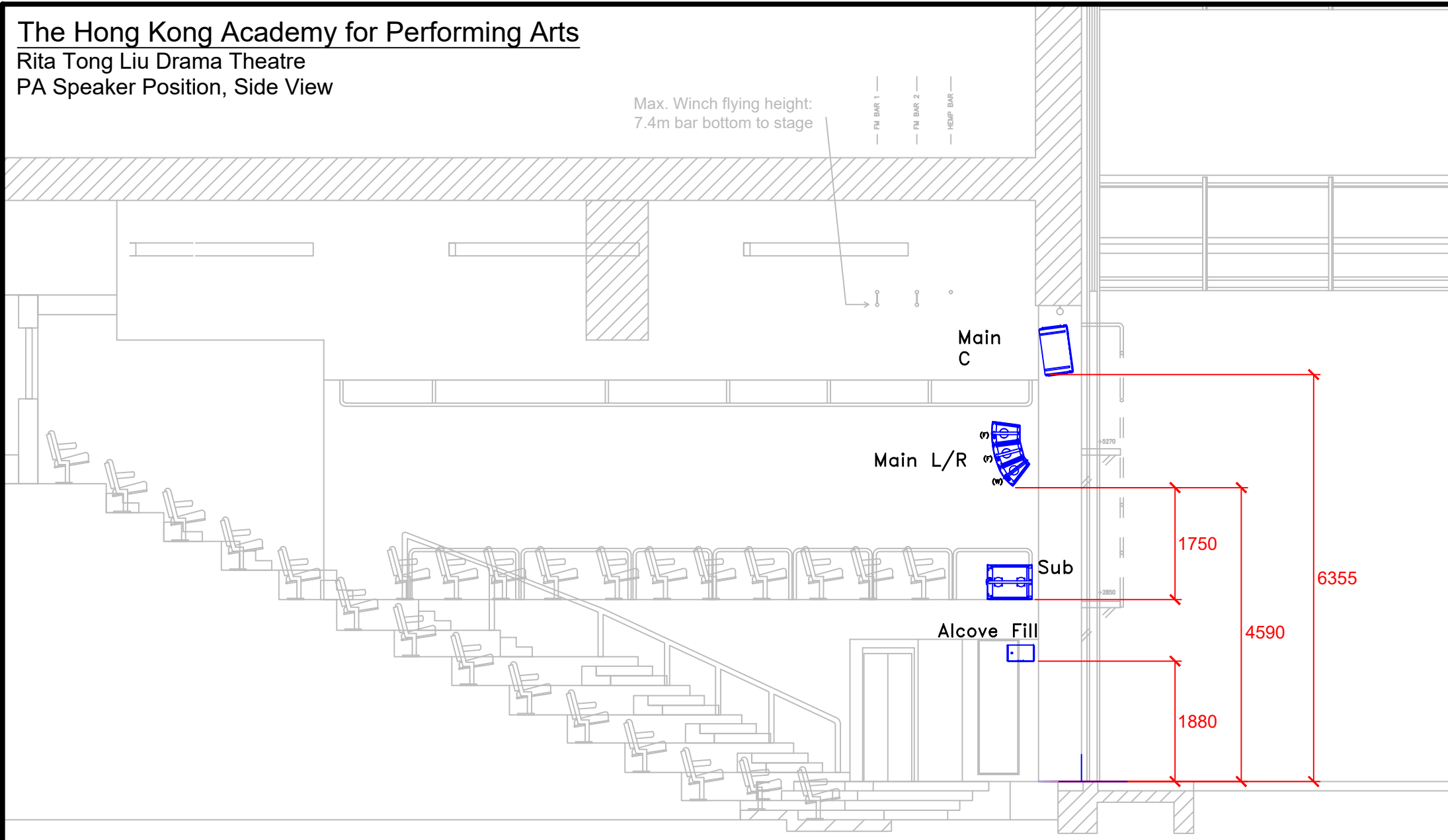


L'acoustics X8 alcove fill speakers
堂座補聲揚聲器系統

SCALE not in Scale	SIZE A4	PROJECT Drama Speaker Project 2016
DATE : 27-10-2021	DRAWING TITLE	DWG NO. _____
DRAWN : L.Fei 27-10-2021	Rita Tong Liu Drama Speaker Plan (Front)	
CHECKED : _D 00-00-2000		
APPROVED : _D 00-00-2000		
REVIEWED : _D 00-00-2000		
CHECKING LEVEL : _D		
ALL DIMENSIONS IN mm.		
		TEL:(852) 2584-8655 FAX:(852) 2584-8925 http://www.hkapa.edu/ 1 Gloucester Road, Wanchai, Hong Kong
SHEET 01 OF 03		REV 1
FILENAME Drama Speaker Plan20211027		

The Hong Kong Academy for Performing Arts

Rita Tong Liu Drama Theatre PA Speaker Position, Side View



LEGEND 音箱設備



L'acoustics ARCS Wide speakers (Main C)
中央聲道揚聲器系統



ARCS Focus L'acoustics ARCS Focus (F) &
Wide (W) speakers (Main L/R)



ARCS Wide 兩側的雙聲道揚聲器系統



L'acoustics SB18i subwoofers (Sub)
兩側的雙聲道低頻揚聲器系統



L'acoustics X8 alcove fill speakers
堂座補聲揚聲器系統

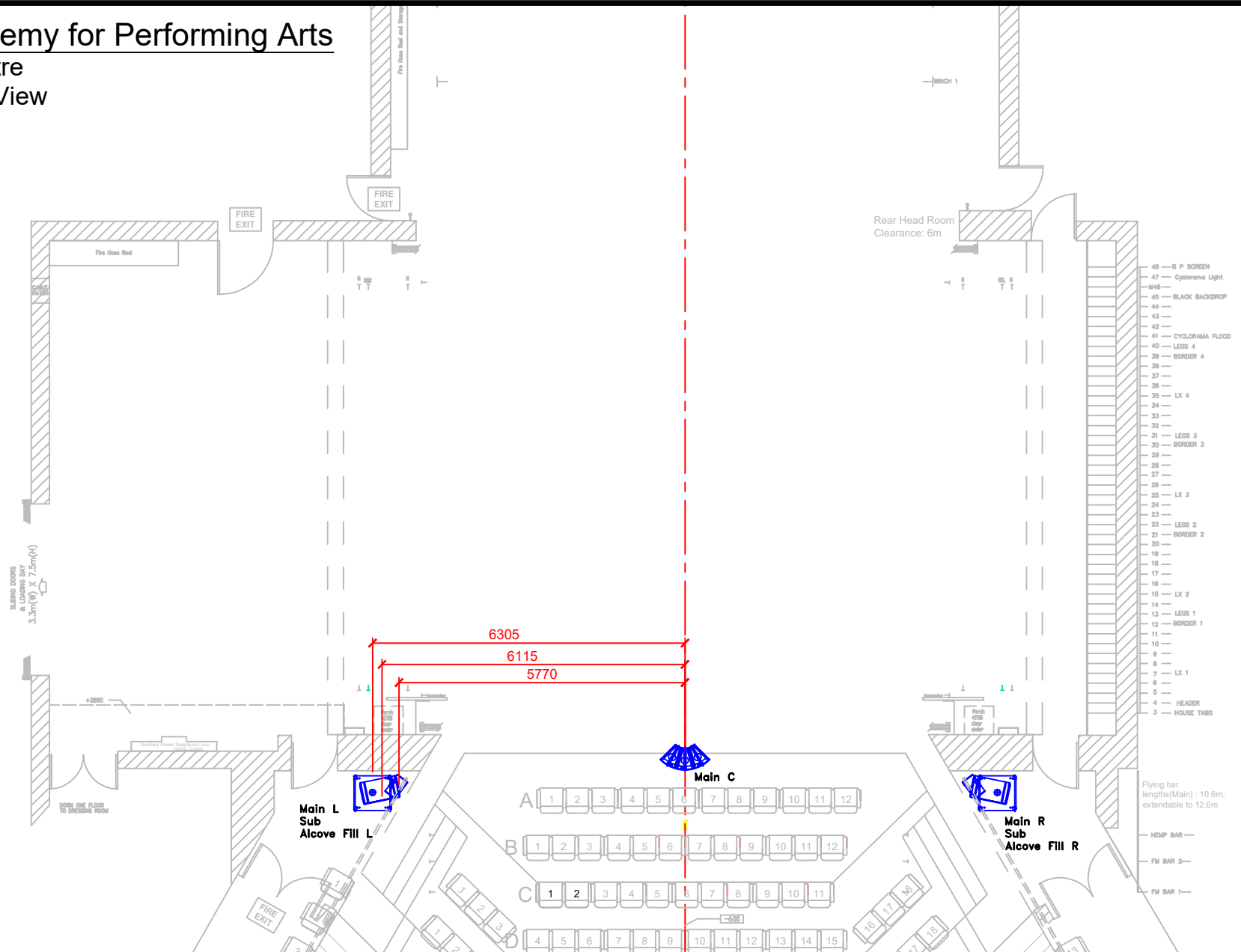
SCALE not in Scale	SIZE A4
DATE : 27-10-2021	
DRAWN : L.Fai	27-10-2021
CHECKED : _D	00-00-2000
APPROVED : _D	00-00-2000
REVIEWED : _D	00-00-2000
CHECKING LEVEL : _D	
ALL DIMENSIONS IN mm.	

PROJECT Drama Speaker Project 2016	DWG NO. -
DRAWING TITLE Rita Tong Liu Drama Speaker Plan (Side)	
	TEL:(852) 2584-8855 FAX:(852) 2584-8928 http://www.hkapa.edu/ 1 Gloucester Road, Wanchai, Hong Kong
SHEET 02 OF 03	REV 1
FILENAME Drama Speaker Plan20211027	

The Hong Kong Academy for Performing Arts

Rita Tong Liu Drama Theatre

PA Speaker Position, Top View



LEGEND 音箱設備



L'acoustics ARCS Wide speakers (Main C)
中央聲道揚聲器系統



L'acoustics ARCS Focus (F) &
Wide (W) speakers (Main L/R)



兩側的雙聲道揚聲器系統



L'acoustics SB18i subwoofers (Sub)
兩側的雙聲道低頻揚聲器系統



L'acoustics X8 alcove fill speakers
堂座補聲揚聲器系統

SCALE not in Scale	SIZE A4	PROJECT Drama Speaker Project 2016
DATE : 27-10-2021	DRAWN : L.Fai	DWG NO. _____
CHECKED : _D	APPROVED : _D	DRAWING TITLE Rita Tong Liu Drama Speaker Plan (Top)
REVIEWED : _D	CHECKING LEVEL : _D	SHEET 03 OF 03
ALL DIMENSIONS IN mm.		TEL:(852) 2584-8655 FAX:(852) 2584-8928 http://www.hkapa.edu/ 1 Gloucester Road, Wanchai, Hong Kong
		FILENAME Drama Speaker Plan20211027 REV 1